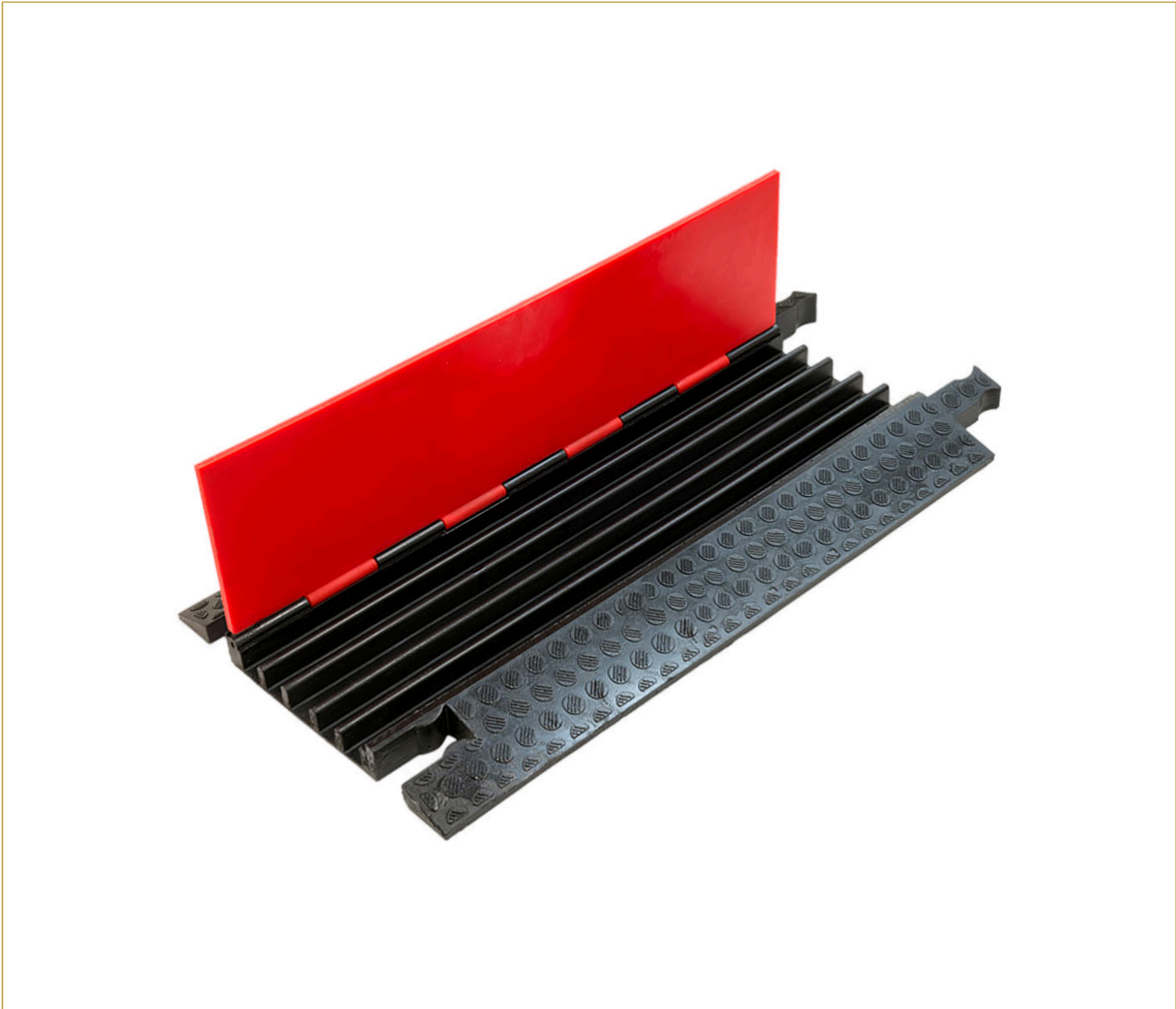


## STANDARD RED LINE 5-CHANNEL CABLE RAMP



Heavy-duty 5-channel cable ramp providing robust protection for cables in high-traffic areas, ideal for vehicles and pedestrians.

**SKU:** N/A | **Categories:** [Cable Ramps and Protectors](#)



## PRODUCT DESCRIPTION

The Red Line 5-Channel Cable Ramp is a reliable and heavy-duty solution for protecting cables and hoses in high-traffic areas. With five spacious channels, each measuring 55mm x 55mm, this robust ramp ensures safe passage for both pedestrians and vehicles, making it ideal for events, construction sites, and industrial settings.

Engineered from durable materials, the ramp supports a maximum axle load of 11,500 kg (25,353 lbs), providing dependable protection for cables while withstanding heavy loads. Its modular design enables quick and easy installation, with an interlocking system that allows multiple ramps to be connected for extended cable runs.

The ramp's high-visibility red surface enhances safety by ensuring clear awareness in busy environments. With flexible applications and compatibility for housing Powerline QC single pole connectors in each channel, the Red Line 5-Channel Cable Ramp delivers a robust and versatile cable management solution.

## TECHNICAL INFORMATIONS

<b>Weight</b>	20.5 lbs
<b>Dimensions</b>	0.91 x 0.62 x 0.074 in
<b>Material</b>	Heavy-duty composite with high-visibility red surface
<b>Channels</b>	5
<b>Channel Size</b>	55mm x 55mm
<b>Weight Capacity</b>	Supports heavy vehicle traffic
<b>Max Load per Axle</b>	11,500 kg (25,353 lbs)
<b>Connector Type</b>	Large Dog Bone Connectors for secure modular integration
<b>Special Capacity</b>	Accommodates Powerline QC single-pole connectors in each channel
<b>Applications</b>	High-traffic areas, including event venues, worksites, and industrial settings



